

GETTING STARTED

To enter the control panel’s System Configuration module to program sensor zones and modify settings:

- 1. At Home screen, tap logo in lower-right corner.
Enter: Master Installer Code.
Tap: System Configuration.

Or

- 2. At Home screen:
Tap: Security > Menu > Toolbox.
Enter: Master Installer Code.
Tap: ▶ ▶ Installer Toolbox > System Configuration

To navigate through questions and options in the System Configuration module:

- Tap ◀ or ▶ to scroll between options on the active screen.
- Tap ▲ or ▼ to move to the previous or next screen’s question.

For step-by-step programming information, see the installation instructions for the peripheral device or the control panel’s *Installation and Programming Guide* from dealer.2gig.com.

Q1 WIRELESS ZONE PROGRAMMING

(Q1) SELECT RF SENSOR # (1-48, 63-74)

- Select:** RF Sensor # (1-48, 63-74) ▶ to select the desired zone option. Then tap ▼
- Select:** RF Sensor # Type ▶ to select type. Then tap ▼
- Select:** RF Sensor Equipment Code ▶ to select code (see *Equipment Codes* on page 4). Then tap ▼
- Enter:** RF Sensor # Serial Number (7 Digits) Enter the serial number or place the control panel into learning mode by tapping **Shift > Learn** and then trip the sensor to transmit its serial number to the control panel.
- Select:** RF Sensor # Equipment Age ▶ to select (1) New or (2) Existing Then tap ▼
- Select:** RF Sensor # Loop Number ▶ to select (1) 1, (2) 2, or (3) 3:
1-Use Loop 1 for all 2GIG products (except as noted in loops below)
2-Thin door/window contact using internal switch
3-Flood/freeze sensors. Then tap ▼
- Select:** RF Sensor # Dialer Delay (0 to 1) ▶ until desired option ▼
- Construct:** RF Sensor # Voice Descriptor Tap **Insert**. Then tap ▶ to scroll the available words or enter the 3-digit code associated with the desired word. Tap **Insert** again before adding another word. There is a five (5) word maximum. See *Voice Descriptors* on page 4. Then tap ▼
- Select:** Select RF Sensor # Reports (0 to 1) ▶ to select (1) Enabled or (2) Disabled. Then tap ▼
- Select:** Select RF Sensor # Supervised (0 to 1) ▶ to select (1) Enabled or (2) Disabled. Then tap ▼
- Select:** Sensor Chime ▶ to select chime. Then tap ▼

SUMMARY OF RF SENSOR # SCREEN

The Summary shows the settings for each sensor. Tap **Edit Next** to add the next RF sensor, or tap **Edit Current** to reconfigure the current RF sensor. Tap **Skip** to move to Q2 *Wired Sensor Programming*.

Q2 WIRED SENSOR PROGRAMMING

If no wired sensor programming is needed, tap **Skip** to go to Q3 *Key Fob Programming*.

(Q2) ENTER WIRED SENSOR # (1 thru 2)

- Select:** Sensor (Zone) Type ▶ until desired option ▼
- Select:** Equipment Age (New/Existing) ▶ until desired option ▼
- Select:** Normal State ▶ until desired option ▼
(0) Not Used, (1) Normally Closed, (2) Normally Open, or (3) Mixed with no EOL. Then tap ▼
- Select:** Dialer Delay (Enabled/Disabled) ▶ until desired option ▼
- Construct:** RF Sensor # Voice Descriptor Tap **Insert**. Then tap ▶ to scroll the available words or enter the 3-digit code associated with the desired word. Tap **Insert** again before adding another word. There is a five (5) word maximum. See *Voice Descriptors* on page 4. Then tap ▼
- Select:** Sensor Reports (Enabled/Disabled) ▶ until desired option ▼
- Select:** Sensor Chime ▶ until desired option

SUMMARY OF WIRED SENSOR # SCREEN

The Summary shows the settings for each sensor. Tap **Edit Next** to add the next wired sensor, or tap **Edit Current** to reconfigure the current wired sensor. Tap **Skip** to move to Q3 *Keyfob Programming*.

Q3 KEY FOB PROGRAMMING

If no key fob programming is needed, tap **Skip** to go to Q4 *Keypad Programming*.

(Q3) SELECT FOB # (1 to 8)

- Select:** Fob <#> Used (0 to 1) ▶ to select (1) Disabled or (2) Enabled. Then tap ▼
- Select:** Fob <#> Equipment Code ▶ to select code (see *Equipment Codes* on page 4). Then tap ▼
- Enter:** Fob <#> Serial Number (7-Digits) Enter the serial number manually (7 digits) or place the panel into learning mode by tapping **Shift > Learn** and then tap the **Armed Away** button on the key fob until the LED illuminates and the sensor transmits the serial number.
- Select:** Fob # Equipment Age (0 to 1) ▶ to select (0) New or (1) Existing. Then tap ▼
- Select:** Fob # Emergency Key (0 to 4) ▶ to select (0) Disabled, (1) Auxiliary Alarm, (2) Audible Alarm, (3) Silent Panic, or (4) Fire. Then tap ▼
- Select:** Fob Can Disarm (Enabled/Disabled) ▶ until desired option ▼
- Construct:** RF Sensor # Voice Descriptor Tap **Insert**. Then tap ▶ to scroll the available words or enter the 3-digit code associated with the desired word. Tap **Insert** again before adding another word. There is a five (5) word maximum. See *Voice Descriptors* on page 4. Then tap ▼
- Select:** Fob # Arm No Delay (0 to 1) ▶ to select (0) Disabled or (1) Enabled. Then tap ▼
- Select:** Fob # Key # Output (0 to 2) ▶ to select (0) Disabled, (1) Toggle Output, or (2) Momentary Output. Then tap ▼

SUMMARY OF FOB # SCREEN

The Summary shows the settings for each sensor. Tap **Edit Next** to add the next keyfob, or tap **Edit Current** to reconfigure the current keyfob. Tap **Skip** to move to Q4 *Keypad Programming*.

Q4 KEYPAD PROGRAMMING

If no keypad programming is needed, tap **Skip** to go to *Field Programming for Communication*.

(Q4) SELECT RF KEYPAD # (1 to 4)

- Select:** Keypad RF Keypad # (1 to 4) ▶ to select desired keypad number. Then tap ▼
- Select:** RF Keypad # Used (0 to 1) ▶ to select (0) Disabled or (1) Enabled. Then tap ▼
- Select:** RF Keypad # Equipment Code ▶ to select code (see *Equipment Codes* on page 4). Then tap ▼
- If using a Wireless Keypad (2GIG-PAD1)**
- Enter:** RF Keypad 1 Serial Number (7 Digits) Enter the serial number or place the control panel into learning mode by tapping **Shift > Learn** and then trip the sensor to transmit its serial number to the control panel.
- If using a Wireless Touch Screen Keypad (2GIG-TS1*)**—*Not available in all regions
- Select:** RF Keypad # Keypad ID (Read-Only) Tap the **Learn** button. Then go to the TS1 and tap the **Pair With Panel** button. When the learning operation succeeds, tap **OK** on both the panel and TS1.
- Select:** RF Keypad 1 Equipment Age (0 to 1) ▶ to select (0) New or (1) Existing. Then tap ▼
- Select:** RF Keypad # Emergency Keys (0 to 1) ▶ to select (0) Disabled or (1) Enabled. Then tap ▼
- Construct:** RF Sensor # Voice Descriptor Tap **Insert**. Then tap ▶ to scroll the available words or enter the 3-digit code associated with the desired word. Tap **Insert** again before adding another word. There is a five (5) word maximum. See *Voice Descriptors* on page 4. Then tap ▼

SUMMARY OF RF KEYPAD # SCREEN

The Summary shows the settings for each sensor. **Edit Next** to add the next keypad, **Edit Current** to reconfigure current keypad. Tap **Skip** to move to *Field Programming for Communication*.

FIELD PROGRAMMING FOR COMMUNICATION

(Q13) SELECT TWO-WAY VOICE (0 TO 2)

- Tap:** Go To. Then enter 13 to select a two-way voice option.
- Select:** Two-Way Voice (0 to 2) ▶ to select (1) Stay On Line or (2) Stay On Line, Including Fire and CO Alarms. Then tap ▼

TO SETUP CELL PRIMARY: (Q8) SELECT DIALER (0 TO 1)

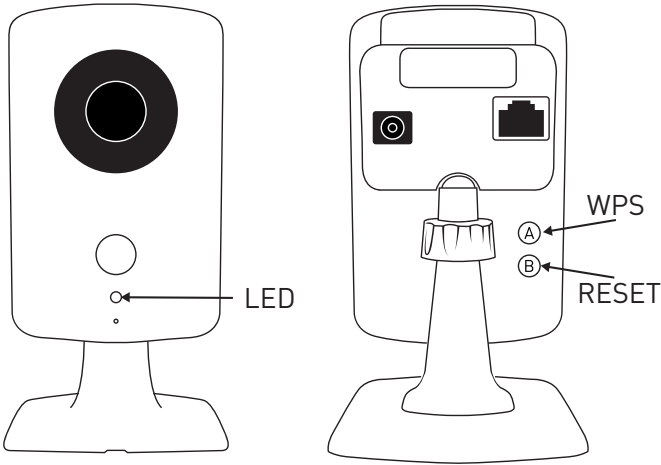
- Tap:** Go To. Then enter 08 to select the dialer.
- Select:** Dialer (0 to 1) ▶ to select (0) Disabled. Then tap ▼
- Tap:** Go To. Then enter 63 to select a phone fail detect option.
- Select:** Phone Fail Detect (0 to 1) ▶ to select (0) Disabled. Then tap ▼

TO SETUP POTS PRIMARY: (Q8) SELECT DIALER (0 TO 1)

- Tap:** Go To. Then enter 08 to select the dialer.
- Select:** Dialer (0 to 1) ▶ to select (1) Enabled. Then tap ▼
- Tap:** Go To. Then enter 63 to select phone fail detect.
- Select:** Phone Fail Detect (0 to 1) ▶ to select (1) Enabled. Then tap ▼
- Tap:** Go To. Then enter 11 to enter the CS Phone Number.
- Select:** CS #1 Phone Number (0-25 Digits) Enter the number. Then tap ▼
- Tap:** Go To. Then enter 12 to enter the CS Account Number.
- Select:** CS#1 Account Number (0-25 Digits) Enter the number. Then tap ▼

Installing the Indoor HD Camera (2GIG-CAM-HD100)*

*The 2GIG-CAM-HD100 is not available in all regions



LED States

| State | LED Pattern |
|-----------------------------|-----------------|
| Normal Operation | Solid GREEN |
| Connectivity Problems | Blinking RED |
| WPS Transaction in Progress | Blinking YELLOW |
| Booting | Solid YELLOW |

RESET TO DEFAULTS

Press and hold button (B) until the camera LED changes to yellow (approximately 10 seconds). When the camera LED changes to yellow, release button (B) to reset the camera to factory defaults.

WIFI TO THE ON-SITE ROUTER (WPS)

1. If the on-site router supports WiFi Protected Setup (WPS), press the **WPS** button (A) until the router enters WPS mode (the indicators will differ slightly from router to router). This gives the router the ability to “listen” for a new WPS device.
2. Press the **WPS** button (A) on the camera. This action causes the camera to announce itself to the router as a WPS device. While the camera is in WPS mode, the LED on the camera blinks YELLOW.
3. Do not press any buttons on the camera until its LED illuminates GREEN, which indicates the camera has successfully connected to the network.
4. From the Alarm.com website add and configure the camera.

WIFI TO THE ON-SITE ROUTER

1. Connect the camera directly to the router using an ethernet cable.
2. From the Alarm.com website add and configure the camera to connect using WiFi.
3. Disconnect the power cable from the camera.
4. Disconnect the Ethernet cable from the camera. A WiFi connection will be established.

ETHERNET TO THE ROUTER

1. Connect the camera directly to the router using an Ethernet cable.
2. From the Alarm.com website add and configure the camera.

NOTE: Access points and cellular “hot spots” will not work with the HD100 Camera. You must have a router installed in the home.

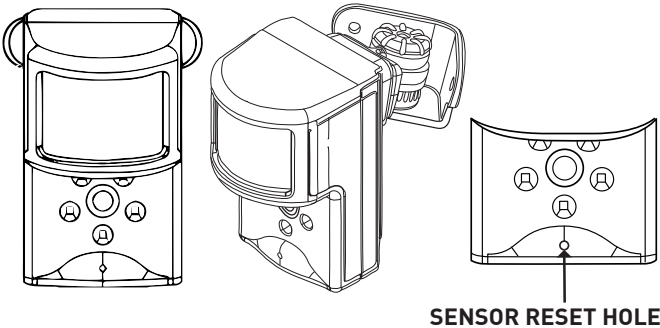
Installing the Image Sensor (2GIG-IMAGE1)*

*The 2GIG-IMAGE1 is not available in all regions

For best results, program one (1) image sensor into the panel at a time and insert the batteries (to trip the sensor) after placing the panel into learning mode.

REQUIREMENTS

- Go!Control Panel (Firmware Version 1.10 or higher)
- 2GIG-Cell Radio Module
- 2GIG Transceiver Module (2GIG-XCVR2-345)



RESETTING THE SENSOR

Before programming the image sensor into a new network, you must reset it as follows:

1. Insert a paperclip into the hole on the front of the sensor to access the **Reset** button.
2. Press and hold the **Reset** button for three (3) seconds. This power cycles the sensor.
3. Hold down the **Reset** button for 10 seconds. When the LED begins flashing, the sensor is reset and is removed from the existing network.

NOTE: If the image sensor is not communicating with its network, you can use the **Reset** button to clear the sensor from that network. If the sensor is still communicating with its network, clear sensor by deleting it from the control panel.

1. **CREATE AN ALARM.COM CUSTOMER ACCOUNT.** When creating an account on the Alarm .com dealer site, enter the serial number for the 2GIG CDMA Cell Radio Module (2GIG-GC-CDMA).
2. **VERIFY THE CELL RADIO AND TRANSCIVER INSTALLATION.** Ensure that the 2GIG-GC CDMA and 2GIG-XCVR2 radio are properly installed and connected inside the control panel. The firmware version must be v1.10 (or higher).
3. **REGISTER MODULE AND TEST COMMUNICATIONS.** Power up the panel and initiate a cell phone test to ensure the communication module is properly installed and communicating with Alarm.com.
4. **PROGRAM THE SENSOR INTO THE CONTROL PANEL.** Enter the control panel’s System Configuration module (see page 1).
 - Select:** **RF Sensor # (01 to 48)** ▶ to select the desired zone option. Then tap ▼
 - Select:** **RF Sensor # Type** ▶ to select (04) Interior Follower, (10) Interior with Delay, or (3) No Response Type. Then tap ▼
 - Select:** **RF Sensor # Equipment Type** ▶ to select (1) Motion. Then tap ▼
 - Select:** **RF Sensor Equipment Code** ▶ to select (9999) Alarm.com Image Sensor. Then tap ▼
 - Enter:** **RF Sensor # Serial Number (Read Only)** Use the MAC address (must be learned into the panel).
 - Select:** **RF Sensor # Equipment Age (0 to 1)** ▶ to select (0) New or (1) Existing. Then tap ▼
 - Select:** **RF Sensor # Loop Number (0 to 3)** ▶ to select (1) 1. Then tap ▼
 - Select:** **RF Sensor # Dialer Delay (0 to 1)** ▶ to select (0) Disabled. Then tap ▼
 - Construct:** **RF Sensor # Voice Descriptor**
Tap **Insert**. Then tap ▶ to scroll through the available words or enter the 3-digit code associated with the desired word. See *Voice Descriptors* on page 4. Then tap ▼
 - Select:** **RF Sensor # Reports (0 to 1)** ▶ to select (1) Enabled. Then tap ▼
 - Select:** **RF Sensor # Supervised (0 to 1)** ▶ to select (1) Enabled. Then tap ▼
 - Select:** **RF Sensor # Chime (00 to 13)** ▶ to select (00) Disabled (A chime is not recommended). Then tap ▼Continue by programming the next image sensor or tap **Skip**, then **End**, and then make sure a checkmark appears in the **Save Changes** box and tap **Exit**.
6. Perform a cell phone test to ensure that the updated equipment list is sent to Alarm.com.

Always set the feature before programming any Z-Wave device:

- (Q79) SELECT Z-WAVE FEATURE (0 to 3)**
Tap: Go To. Then enter **79** to select a Z-Wave feature.
Select: Select Z-Wave Feature (0 to 3) ▶ to select (0) Disabled and Hidden, (1) Disabled but Visible, (2) Enabled on Panel, Remote Access Disabled, or (3) Enabled on Panel; Rules Disabled, Remote Access Enabled. Then tap ▼
- (Q80) SELECT Z-WAVE SWITCHES FEATURE (0 to 1)**
Tap: Go To. Then enter **80** to select a Z-Wave switches feature.
Select: Select Z-Wave Feature (0 to 1) ▶ to select (0) Disabled or (1) Enabled. Then tap ▼
- (Q81) SELECT Z-WAVE THERMOSTATS FEATURE (0 to 1)**
Tap: Go To. Then enter **81** to select a Z-Wave switches feature.
Select: Select Z-Wave Feature (0 to 1) ▶ to select (0) Disabled or (1) Enabled. Then tap ▼
- (Q82) SELECT Z-WAVE DOOR LOCKS FEATURE (0 to 1)**
Tap: Go To. Then enter **82** to select a Z-Wave door locks feature.
Select: Select Z-Wave Feature (0 to 1) ▶ to select (0) Disabled or (1) Enabled. Then tap ▼
- (Q83) SELECT TEMPERATURE DISPLAY UNITS (0 to 1)**
Tap: Go To. Then enter **83** to select a Z-Wave door locks feature.
Select: Select Z-Wave Feature (0 to 1) ▶ to select (0) Degress Farenheit or (1) Degrees Celsius. Then tap ▼

REMOVING A THERMOSTAT, SWITCH, OR DOORLOCK

Because Z-Wave devices are typically programmed into a Z-Wave network at the factory during testing, most Z-Wave devices will need to be removed from that network before you add it to the control panel. To remove a Z-Wave device:

- Tap:** Home Services
Tap: Toolbox (this is the little wrench in the corner)
Enter: Master Installer Code
Tap: Remove Devices
Press/Release: The binding button on the thermostat, switch, or doorlock.
NOTE: Some devices may require you to press the binding button more than once. For details, refer to the Z-Wave device instructions.

The control panel displays the following message: "A device has been removed from the/another network."

ADDING A THERMOSTAT, SWITCH, OR DOORLOCK

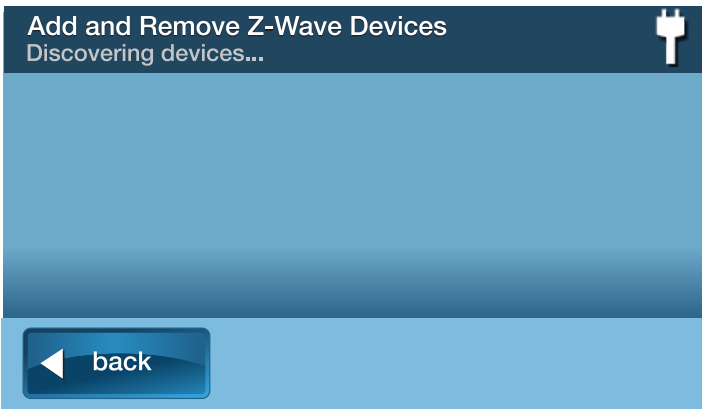
- To add a Z-Wave device to the control panel:
- Tap:** Home Services
Tap: Toolbox (this is the little wrench in the corner)
Enter: Master Installer Code
Tap: Add Devices
Press/Release: The binding button on the thermostat, switch, or doorlock.
NOTE: Some devices may require you to press the binding button more than once. For details, refer to the Z-Wave device instructions.
- Allow time for the panel to fully query the device information.

- Press:** Back
Press: Back

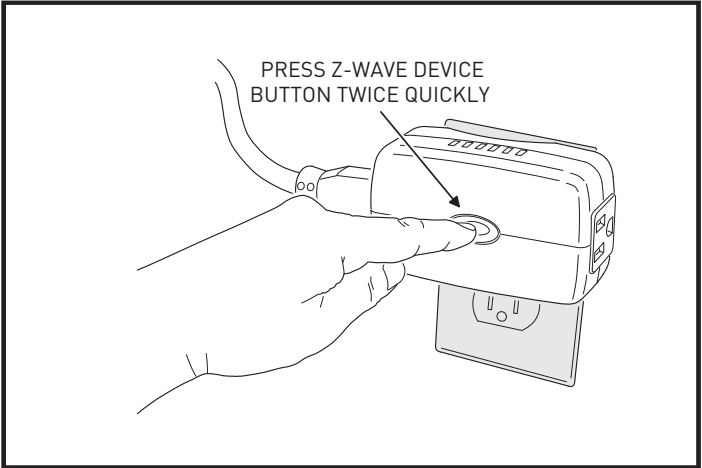
CREATING A SCENE

A *scene* gives you the ability to send commands to different devices at the same time. To create a scene:

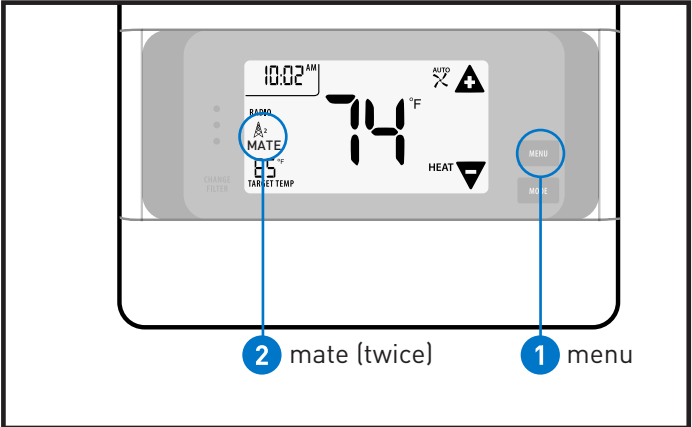
- Tap:** Home Services
Tap: Scenes
Tap: Add Scene
Enter: A name for the new scene using the keypad.
Tap: OK
Tap: Add
Tap: Z-Wave Switch, Z-Wave Thermostat, or Z-Wave Doorlock
Select: For Switch: ON/OFF
For Thermostat: Desired Mode and Setpoint
For Doorlock: Unlock/Lock
Tap: OK



Add & Remove Z-Wave device screen



Pressing the device's programming button



Adding the 2GIG Z-Wave Programmable Thermostat (2GIG-CT100)*
*The 2GIG-CT100 is not available in all regions

CREATING A RULE

A *rule* gives you the ability to trigger a scene after a specific control panel event. For example, you can create a rule to arm the security system when an alarm occurs. To create a rule:

- Tap:** Home Services
Tap: Rules
Tap: Add Rule
Tap: ◀ or ▶ to choose a rule
Tap: ◀ or ▶ to choose a scene
Select: Back

FINAL SETUP (AND CREATING MESH NETWORK)

- Tap:** Home Services
Tap: Toolbox (this is the little wrench in the corner)
Tap: Advanced Toolbox
Tap: Select Rediscover Network

IF YOU WANT TO CREATE A MESH NETWORK: To create a mesh network/using devices as repeaters, complete the steps above and then learn devices in the following order: (1) Switches, (2) Thermostats, and (3) Doorlocks.

| | | | | | | | | | |
|-----|-----------------|-----|---------------|-----|-----------------|-----|-------------|-----|--------------|
| 002 | ABORT | 063 | EIGHTEEN | 124 | KIDS | 185 | RF JAM | 247 | VOICE |
| 003 | AC | 064 | EIGHTY | 125 | KITCHEN | 186 | RIGHT | 248 | WALL |
| 004 | ACCESS | 065 | ELECTRIC | 126 | LAUNDRY | 187 | ROOM | 249 | WATER |
| 005 | ALARM | 066 | ELEVEN | 127 | LEFT | 188 | SAFE | 250 | WEST |
| 006 | AND | 067 | EMERGENCY | 128 | LEVEL | 189 | SECOND | 251 | WINDOW |
| 007 | ANNOUNCEMENT | 068 | ENTER | 129 | LIBRARY | 190 | SECURITY | 252 | WIRELESS |
| 008 | AREA | 069 | ENTRANCE | 130 | LIGHT | 191 | SENSOR | 253 | YARD |
| 009 | ARM | 070 | ENTRY | 131 | LIGHTS | 192 | SENSORS | 254 | ZERO |
| 010 | ARMED | 071 | ERROR | 132 | LIQUOR | 193 | SESSION | 255 | ZONE |
| 011 | ARMING | 072 | EXERCISE | 133 | LIVING | 194 | SET | 256 | BALCONY |
| 012 | AT | 073 | EXIT | 134 | LOADING | 195 | SEVEN | 257 | COURTYARD |
| 013 | ATTIC | 074 | EXIT NOW | 136 | LOCK | 196 | SEVENTEEN | 258 | DECK |
| 014 | AUDIO | 075 | EXTERIOR | 136 | LOFT | 197 | SEVENTY | 259 | DETACHED |
| 015 | AUTO | 076 | EXTERNAL | 137 | LOW | 198 | SHED | 260 | OVERHEAD |
| 016 | AUTOMATION | 077 | FAILURE | 138 | MAIN | 199 | SHOP | 261 | REFRIGERATOR |
| 017 | AUXILIARY | 078 | FAMILY | 139 | MAINTENANCE | 200 | SIDE | 262 | SERVICE |
| 018 | AWAY | 079 | FAN | 140 | MASTER | 201 | SILENT | 263 | SUNROOM |
| 019 | BABY'S | 080 | FIFTEEN | 141 | MEDICAL | 202 | SIREN | 264 | WAREHOUSE |
| 020 | BACK | 081 | FIFTY | 142 | MEDICINE | 203 | SIX | 265 | GATE |
| 021 | BASEMENT | 082 | FIRE | 143 | MENU | 204 | SIXTEEN | 266 | APARTMENT |
| 022 | BATHROOM | 083 | FIRE ALERT | 144 | MIDDLE | 205 | SIXTY | 267 | FOYER |
| 023 | BATTERY | 084 | FIRE DETECTOR | 145 | MONITOR | 206 | SKYLIGHT | 268 | TV |
| 024 | BEDROOM | 085 | FIRST | 146 | MOTION | 207 | SLIDING | 269 | VIDEO |
| 025 | BONUS | 086 | FIVE | 147 | MOTION DETECTOR | 208 | SMOKE | 270 | PORCH |
| 026 | BREAK | 087 | FLOOD | 148 | MUD | 209 | SOUNDER | 271 | CORNER |
| 027 | BUTTON | 088 | FLOOR | 149 | NINE | 210 | SOUTH | 272 | BELL |
| 028 | BYPASS | 089 | FLUID | 150 | NINETEEN | 212 | SPARE | 273 | BOY'S |
| 029 | BYPASSED | 090 | FOIL | 151 | NINETY | 213 | STAIRS | 274 | CAMERA |
| 030 | CABINET | 091 | FOR | 152 | NORTH | 214 | STAR | 275 | CAVE |
| 031 | CANCEL | 092 | FORTY | 153 | NOT | 215 | STATUS | 276 | DAUGHTER'S |
| 032 | CARBON MONOXIDE | 093 | FOUR | 154 | NOT READY | 216 | STAY | 277 | DOORBELL |
| 033 | CELLAR | 094 | FOURTEEN | 155 | NO DELAY | 217 | STOP | 278 | GIRL'S |
| 034 | CELLULAR | 095 | FOURTH | 156 | NO ENTRY DELAY | 218 | STORAGE | 279 | IMAGE |
| 035 | CELL RADIO | 096 | FREEZE | 157 | NURSERY | 219 | STUDY | 280 | IMAGE SENSOR |
| 036 | CENTER | 097 | FREEZER | 158 | OFF | 220 | SUMP | 281 | MAN |
| 037 | CHECK | 098 | FRONT | 159 | OFFICE | 221 | SUPERVISION | 282 | SON'S |
| 038 | CHEST | 099 | FURNACE | 160 | ON | 222 | SYSTEM | 283 | SUN |
| 039 | CHILDREN'S | 100 | GAME | 161 | ONE | 223 | TAMPER | 284 | THEATER |
| 040 | CHIME | 101 | GARAGE | 162 | ONE HUNDRED | 224 | TEMPERATURE | 285 | WING |
| 041 | CLOSET | 102 | GAS | 163 | OUTPUT | 225 | TEN | 286 | SWITCH |
| 042 | CODE | 103 | GLASS | 164 | OUTSIDE | 226 | TERMINATED | | |
| 043 | COMMUNICATIONS | 104 | GLASS BREAK | 165 | PANEL | 227 | THERMOSTAT | | |
| 044 | COMPUTER | 105 | GUEST | 166 | PANIC | 228 | THIRD | | |
| 045 | CONTROL | 106 | GUN | 167 | PANTRY | 229 | THIRTEEN | | |
| 046 | COOL | 107 | HALL | 168 | PATIO | 230 | THIRTY | | |
| 047 | CRAWL | 108 | HALLWAY | 169 | PERIMETER | 231 | THREE | | |
| 048 | CURRENT | 109 | HANGING | 170 | PHONE LINE | 232 | TO | | |
| 049 | DAY | 110 | HANGUP | 171 | PLAY | 233 | TOOL | | |
| 050 | DEGREES | 111 | HEAT | 172 | POLICE | 234 | TRANSMITTED | | |
| 051 | DEN | 112 | HIGH | 173 | POOL | 235 | TRANSMITTER | | |
| 052 | DETECTOR | 113 | HOME | 174 | POUND | 236 | TROUBLE | | |
| 053 | DIM | 114 | HOUSE | 175 | POWER | 237 | TURN | | |
| 054 | DINING | 115 | ICE | 176 | PRESS | 238 | TWELVE | | |
| 055 | DISARM | 116 | INSIDE | 177 | PREVIOUS | 239 | TWENTY | | |
| 056 | DISARMED | 117 | INSTANT | 178 | PUMP | 240 | TWO | | |
| 057 | DOCK | 118 | INTERIOR | 179 | RADIO | 241 | UNLOCK | | |
| 058 | DOOR | 119 | INTRUSION | 180 | READY | 242 | UPPER | | |
| 059 | DOWNSTAIRS | 120 | IS | 181 | REAR | 243 | UPSTAIRS | | |
| 060 | DRIVEWAY | 121 | KEY | 182 | RELAY | 244 | USER | | |
| 061 | EAST | 122 | KEYFOB | 183 | REMOTE | 245 | UTILITY | | |
| 062 | EIGHT | 123 | KEYPAD | 184 | REPEAT | 246 | VALVE | | |

Equipment Codes

The Equipment Codes below are available in firmware version 1.14. Previous versions may not have all the descriptors in this list.

| | | | | | |
|--------|-------------------------------|--------|--------------------------------|--------|-------------------------------|
| (0000) | Other | (0708) | Existing Heat Sensor | (1058) | 2GIG Smoke Detector |
| (0470) | HW R-D/W “5818MNL” | (0859) | CO1-345C CO Detector (Canada) | (1059) | 2GIG-TS1 Wireless Touchscreen |
| (0475) | Existing Glass Break Detector | (0860) | CO1-345 CO Detector (USA) | | Keypad |
| (0491) | HW Panic Pendant “5802MN2” | (0862) | 2GIG Thin Door/Window Contact | (1061) | Tilt Sensor |
| (0519) | HW Glass Break “5853” | (0863) | 2GIG Recessed Door Contact | (1062) | 2GIG Tilt Sensor |
| (0530) | HW PIR “5894PI” | (0864) | 2GIG Glass Break Detector | (1063) | 2GIG Doorbell |
| (0533) | HW PIR “5890” | (0866) | 2GIG 4-Button Keyfob Remote | (1064) | 2GIG Bypass Sensor |
| (0556) | Existing Flood/Temp Sensor | (0867) | 2GIG Wireless Keypad | (1065) | 2GIG Flood Sensor |
| (0557) | HW Heat Sensor “5809” | (0868) | 2GIG Panic Button Remote | (1066) | 2GIG Shock Sensor |
| (0577) | Existing Keyfob Remote | (0869) | 2GIG PIR with Pet Immunity | (9999) | Alarm.com Image Sensor |
| (0589) | HW Smoke “5808W3” | (0871) | SMKE1-345C Smoke Detector | | |
| (0609) | Existing Motion Detector | | (Canada) | | |
| (0616) | Existing Smoke Detector | (0872) | SMKE1-345 Smoke Detector (USA) | | |
| (0624) | HW Flood Sensor “5821” | (0873) | 2GIG Takeover Module | | |
| (0637) | HWD/W”5816” | (0895) | SMTK2-345 GE Smoke/Heat | | |
| (0655) | Existing Door/Window Contact | | Detector (USA/Canada) | | |
| (0692) | Existing CO Detector | (1026) | 2GIG CO Detector | | |