

8 Channel IP Kit

INCLUDES: 8-Channel N2NVR w/ 2TB Storage

***6x 4MP IP, 2.8mm Eyeball Cameras with 75' IR**

***Customize Your Kit with 2 Additional Northern[★] N2 Series IP Cameras (sold separately).**



N2NVR8 FEATURES:

- ◆ Real Time 30FPS Recording @ 1080p
- ◆ 2 Terabyte Included Storage
- ◆ Up to 8MP Recording
- ◆ H.265 Recording Compression
- ◆ NorthernView Mobile App for iPhone, iPad & Android™
- ◆ Supports P2P Operation
- ◆ Integrated 80W POE Switch
- ◆ Included Mouse for NVR Control
- ◆ Dual USB for Mouse Control & Copying Video
- ◆ Simultaneous HDMI & VGA Outputs
- ◆ Up to 8 Channel Synchronous Playback
- ◆ Built-In Audio & Alarm
- ◆ Supports 2-Way Audio
- ◆ Rack Mount Hardware Included



NORTHERN VIEW

Free Mobile App for iPhone,
iPad, Android™ & Android™ Tablets

CAMERA FEATURES:

- ◆ Up to 25FPS, 4MP Max Resolution
- ◆ H.265 Recording Compression
- ◆ Digital Wide Dynamic Range
- ◆ Fixed Focal 2.8mm IR Lens
- ◆ 18 IR LED's – 75' IR Range
- ◆ Mechanical IR Cut Filter
- ◆ Dual Stream Capability
- ◆ 3D Digital Noise Reduction
- ◆ POE- Power over Ethernet
- ◆ IP66 Weatherproof

Android is a trademark of Google LLC.



N2NVR Kit Series

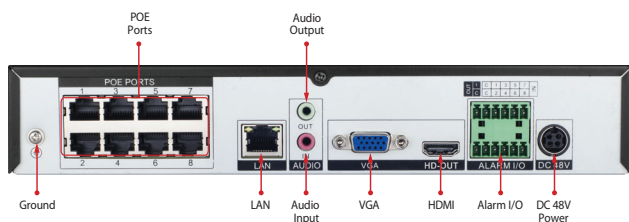
N2NVR8POE Specifications

		N2NVR8POE
Video/Audio Input	IP Video Input	8-Channel
	Two-Way Audio Input	3.5mm Audio Jack
	NTSC / PAL	Yes
	Additional Plug & Play Cameras	"N2 Series Only" N2IP4B, N2IP4D, N2IP4D4MM, N2IP4T, N2IP4W, N2IP4AFD, N2IP4AFB, N2IPPTZ30X, N2IPKITCAM
Network	Incoming Bandwidth	80 Mbps
	Outgoing Bandwidth	80 Mbps
	Remote Connection	Up to 9 Users
Video/Audio Output	Recording Resolution	8MP / 6MP / 5MP / 4MP / 3MP / 1080p / 720p / D-1
	Frame Rate	8MP / 6MP / 5MP / 4MP / 3MP / 1080p / 720p / D-1 @ 30fps
	HDMI Output Resolution	3840 x 2160, 1920 x 1080, 1440 x 900, 1280 x 1024
	VGA Output Resolution	1920 x 1080, 1280 x 1024, 1280 x 720
	Audio Output	3.5mm Audio Jack - For Two-Way Audio Only
De-coding	Live / Playback Resolution	8MP / 6MP / 5MP / 4MP / 3MP / 1080p / 720p / D-1
	Playback Capability	1Ch-8MP / 4Ch-1080P@30fps / 8Ch-D1@30fps
Recording & Playback	Compression	H.265 , H.265+, H.264, H.264+
	Record Mode Types	Manual, Schedule (Regular, Continuous), Motion Detection, Alarm In
	Bit Rate (Per Channel)	100Kbps ~ 6000Kbps
	Pre & Post Recording	Auto Pre Recording based on # of Cameras Connected / Post Record (30 sec ~ 60 sec adjustable)
	Redundant Recording	N/A
	Recording Parameters	Independent for Each Channel (Resolution, Frame Rate, Bit Rate, etc.)
	Zooming	Yes - Digital Zoom Available in Live View & Playback
	Synchronous Playback	Up to 8Ch
	Playback Controls	Play, Pause, Stop, Rewind, Fast Play, Slow
	Searching	Time / Date, Alarm, Picture Grid, Event
Hard Disk	SATA	2x
	Capacity	2TB Installed
	HDD Detection	Built-IN SMART Detection
External interface	Network Interface	1 RJ-45 port (10/100Mbps)
	USB Interface	2x USB 2.0
	Alarm In/Out	8/1
	CMS Software	Included N2 Series CMS
PoE	Network Interface	8Ch 100Mbps
	Maximum Power	80W
	Supported Standard	IEEE 802.3af
General	Power Supply	DC48V/2.5A
	Consumption (no HDD)	< 5W
	Operating Temperature	-10 °C ~ 50 °C (14 °F ~ 122 °F)
	Operating Humidity	Less than 90% RH
	Chassis	1U Rack Mount
	Dimensions	372x310x46.5mm
	Weight (no HDD)	4.6lb / 2.1kg

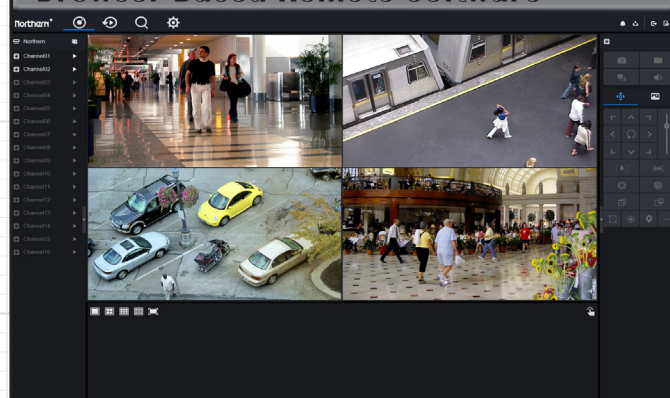
Note: Specification subject to change without notice

N2NVR Kit Series

N2NVR8 Rear Panel Definitions



Browser Based Remote Software



N2IPKITCAM Camera Specifications



	FEATURES	N2IPKITCAM
Camera	Image Sensor	1/3" Progressive Scan CMOS
	Minimum Illumination	Color: 0.05Lux @(F1.2,AGC ON) , B/W: 0Lux @(IR LED ON)
	S/N Ratio	55dB
	IR LED Count / Range / Nanometer	18 IR LED's / 75' Range / 850nm
	Shutter Time	1/5s - 1/20,000s
	Lens (IR Corrective)	Fixed 2.8mm - Angle of View 100° -
	Camera Bracket Adjustment	Pan: 0°~360°, Tilt: 0°~90°, Rotation: 0°~360°
	Day & Night	Yes - True Day/Night with IR Filter - Auto Switch
	DNR (Digital Noise Reduction)	2DNR & 3DNR, Auto / Manual (0-100 Adjustable)
	True Wide Dynamic Range (120dB)	On / Off (0-100 Adjustable)
	BLC (Backlight Compensation)	On / Off (0-100 Adjustable)
	Smart Analytic Features	Virtual Fence, Advanced Motion Detection
	Region of Interest	Yes
Resolution/Bitrate	Video Compression	H.265, H.264, MJPEG (for both stream types)
	Max. Resolution	2560 x 1440 (4MP)
	Mainstream Resolution	2560x1440, 2304x1520, 1920x1080, 1280x720 @25
	Substream Resolution	704x576, 640x360, 480x360, 352x288 @ 25FPS
Network	Video Bitrate	Main: 128kbps ~ 6144kbps Sub: 16kbps ~ 1536kbps
	Protocols	IPv4, HTTP, HTTPS, TCP/UDP, RTSP, DHCP, NTP, RTCP/RTP, SMTP, DNS, UPnP, SNMP
	General Function	Supports Mirror, Aisle Mode, Smart IR, Password Protection, Privacy Mask, Motion Detection
	Client Software	NorthernView CMS, NorthernView Mobile App, NorthernView Tools
	Web Browser	IE11, Chrome, Firefox
	Communication Interface	1 Ethernet (10/100 Base-T) RJ-45 Connector
	Operating Conditions	-15°C ~ 55°C (5°F ~ 131°F) , Less than 90% RH
General	Power Requirement	12VDC / POE (IEEE 802.3af)
	Power Consumption & Current	2W (IR LED OFF), 4W Max (IR LED ON)
	Weatherproof Rating	IP66
	Housing Material / Color	Aluminum / White
	Overall Camera Dimensions	φ3.7" x 3.3" (φ94 x 84mm)
	Weight	0.77lb / 350g
	Certifications	CE / FCC

Note: Specification subject to change without notice